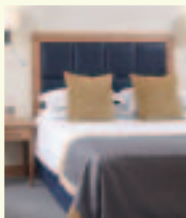


OTELLS

The Oxford Belfry

Thame, Oxford

★★★★



154 Bedrooms

17 Conference and Meeting Rooms

Great Bar and excellent Restaurant Facilities

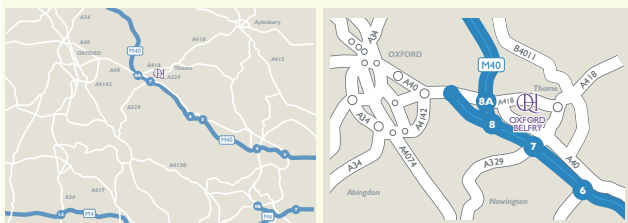
Grounds for Team Building Events

Reflections – Health, Fitness and Spa

Free Parking for 200 Cars

Minutes from the M40

HOW TO FIND THE OXFORD BELFRY



BY ROAD

From the North (Bicester, Birmingham, Manchester, M42, M6)

Exit M40 at Oxford Services (Jnc 8/8A). At slip road roundabout take 2nd exit; signposted A418 to Aylesbury. After approximately 1/2 mile, turn right onto A40 to Milton Common & Wallingford. The hotel is situated 1 1/2 miles along on the left-hand side.

From the South (London, High Wycombe)

Exit M40 at Jnc 7. Turn right, following A329 towards Thame. Immediately after crossing over the motorway, turn left onto A40. The hotel is situated 300 yards on the right-hand side.

From Thame

Follow A329 towards Oxford/M40 (London). After approximately four miles, just before M40, turn right onto the A40. The hotel is situated 300 yards on the right-hand side.

From Oxford City Centre

Heading east out of the city centre, follow signs for A40/M40 London. Continue along A40 until signposted for A418 Aylesbury/Services. Exit this slip road and follow A418 to Thame/Aylesbury through two roundabouts (over M40, Junction 8/8A). After approximately 1/2 mile has passed (beyond Waterstock golf club), turn right onto A40 to Milton Common & Wallingford.

The hotel is situated 1 1/2 miles on the left-hand side.

From the M1 (Northampton, Milton Keynes/Aylesbury)

From Northampton:- Exit M1 at Jnc 15A (Rothersthorpe Service Station). Follow A43 through Towcester to M40 South, Jnc 10. Exit M40 at Oxford services (Jnc 8/8A). At slip road roundabout take 2nd exit, signposted A418 to Aylesbury. After approximately 1/2 mile, turn right onto A40 to Milton Common & Wallingford. The hotel is situated 1 1/2 miles on the left-hand side.

From M4 (Swindon, Newbury)

Exit M4 at Jnc 13. Follow A34 towards Abingdon & Oxford. At Oxford Ring Road, follow A4142 eastwards then A40 signposted M40. Continue along A40 until signposted for A418 Aylesbury/Services. Exit this slip road and follow A418 to Thame/Aylesbury through two roundabouts (over M40, Junction 8/8A). After approximately 1/2 mile has passed (beyond Waterstock golf club), turn right onto A40 to Milton Common & Wallingford.

The hotel is situated 1 1/2 miles on the left-hand side.

BY RAIL

Haddenham and Thame – 7 miles.

Oxford – 14 miles.

THE OXFORD BELFRY



Milton Common, Thame, Oxfordshire, OX9 2JW

Tel: 01844 279381 Fax: 01844 279624

Email: oxfordbelfryevents@qhotels.co.uk

www.qhotels.co.uk

To help us continually improve our service we may monitor and/or record your telephone calls with us.