

QHOTELS

The Cambridge Belfry

Cambourne, Cambridge

★★★★





## A WARM WELCOME TO CAMBRIDGESHIRE

Just six miles from Junction 13 of the M11 and A14, the Cambridge Belfry enjoys a magnificent lakeside location. It is situated at the gateway of Cambourne Village and is ideally positioned for easy access to the historic city of Cambridge.

If your conference permits, the university city of Cambridge offers a unique mix of cosmopolitan life and historic ancestry, which continues to draw visitors from near and far. From the wonders of Kings College and the University, to the buzz of activity in the city centre shops, Cambridge has something for everyone.

The area also boasts a variety of cultural and modern tourist attractions. The splendour of Wimpole Hall and Home Farm, the excitement of Newmarket and Huntingdon Races, the tranquil American Cemetery and the wonders of the Imperial War Museum at Duxford offer lots to choose from.

- Just six miles from Junction 13 of the M11.
- On the doorstep to historic Cambridge.
- Close to major attractions.
- Free car parking.





## A RARE COMBINATION OF COMFORT AND ELEGANCE

The 120 bedrooms at The Cambridge Belfry have all the amenities expected from a four star hotel including broadband internet access and built in DVD players.

There is a range of Deluxe Bedrooms and Suites including the ultimate extravagance – six individually designed Penthouse Suites all situated in the eaves of the hotel offering comfort in a unique style.

The delightful Bridge Restaurant serves a variety of traditional and international cuisine to cater for all tastes. Light meals and snacks can be enjoyed in the Library and Churchill Lounges.

Our professional teams are on hand to make your stay as enjoyable as possible.

- 120 luxurious bedrooms including six indulgent Penthouse Suites.
- AA rosette winning Bridge Restaurant.
- Relaxing bar and lounge area in which to relax.
- Private dining options available.
- 24 hour room service.
- Exceptional service.





## A PROFESSIONAL APPROACH TO EVENTS MANAGEMENT

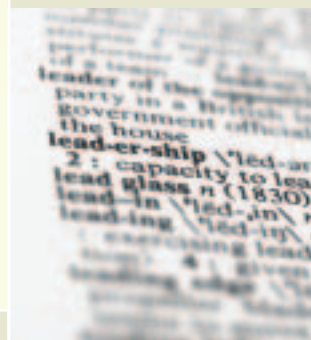
Conveniently situated at the gateway of the new Cambourne Village and Business Park, The Cambridge Belfry is only nine miles from Cambridge and just a few miles from Junction 13 of the M11.

The hotel offers an extensive range of modern and versatile conference rooms for any occasion. All eight conference and banqueting rooms are equipped with state-of-the-art facilities. The largest Suite, the University Suite can cater for 250 delegates theatre style and is a flexible Suite that can be divided into two smaller rooms depending on your needs.

A Dedicated Event Manager will ensure that your event runs smoothly and professionally allowing you to relax and enjoy your event.

On or off site team building activities can be arranged to suit your needs.

- Eight conference and event rooms for up to 250 delegates.
- Event Manager to ensure 100% commitment, efficiency and peace of mind.
- Grounds for team building activities.
- Free car parking.
- Broadband internet access.



# EVENTS BY HOTELS

## OUR COMMITMENT TO YOU

We believe in the highest standards and quality of both product and service and want to provide this without compromise. We have invested in a package of conference standards to ensure your event runs smoothly, efficiently and professionally. If any part of your event does not meet our Service Delivery Guarantee and we have failed to rectify the situation to your satisfaction once you have brought it to our attention, we will deduct 20% off your final invoice.

You will receive an immediate acknowledgement to any event enquiry and a response within an agreed timescale that suits you.

A specialist Event Manager will handle all the details of your event, and you will be able to contact them directly throughout your event.

You will find no hidden extras. All prices - for packages and additional service - will be clearly presented, in plain English so they are clearly understood.

Your meeting room will be set up in the format requested, at least 30 minutes before the commencement of your event, unless agreed otherwise.

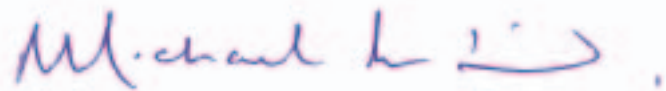
Incoming messages and faxes will be delivered to the meeting room or an agreed alternative point within 10 minutes of receipt.

All refreshment breaks and meals will start no later than (and will be completed by) the times specified and agreed prior to the event.

The Events Manager will conduct a de-brief with the organiser before departure if suitable.

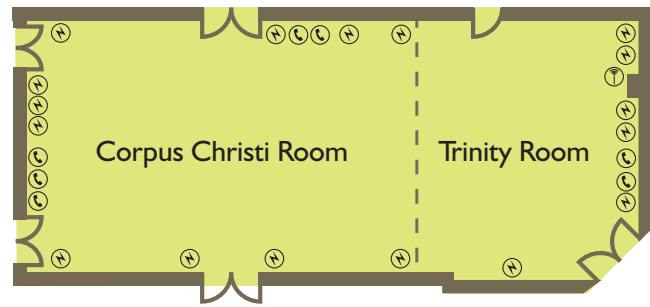
You will receive a follow up call within 3 days to discuss the success of your event and a guarantee to respond to any points raised, within 48 hours.

Your bill will be sent no later than 3 working days after the event is over. It will clearly reflect the written quotation plus any extra charges which you have authorised.



Michael Purtil  
MANAGING DIRECTOR





**COLLEGE SUITE**  
(Ground Floor)

**FEATURES**  
Ground floor  
Natural Light  
Air Conditioning  
Access to the Courtyard

**DIMENSIONS**

Room Size	185.12.m <sup>2</sup>
Length	20.8m
Width	7.8m
Height	2.3m

**CAPACITIES**

Maximum Capacity	180
Classroom	60
Boardroom	60
U-shape	50
Reception	200
Banquet	160
Dinner Dance	110
Theatre	150
Cabaret	60

**CORPUS CHRISTI**  
(Ground Floor)

**FEATURES**  
Ground floor  
Natural Light  
Air Conditioning  
Access to the Courtyard

**DIMENSIONS**

Room Size	128.16.m <sup>2</sup>
Length	14.4m
Width	8.9m
Height	2.4m

**CAPACITIES**

Maximum Capacity	100
Classroom	50
Boardroom	45
U-shape	50
Reception	150
Banquet	100
Dinner Dance	80
Theatre	100
Cabaret	60

**TRINITY**  
(Ground Floor)

**FEATURES**  
Ground floor  
Air Conditioning

**DIMENSIONS**

Room Size	59.6.m <sup>2</sup>
Length	8.9m
Width	6.0m
Height	2.3m

**CAPACITIES**

Maximum Capacity	40
Classroom	20
Boardroom	25
U-shape	25
Reception	50
Banquet	40
Dinner Dance	0
Theatre	40
Cabaret	25

**THE ROYAL SUITE**  
(Ground Floor)

**FEATURES**  
Ground floor  
Natural Light  
Air Conditioning  
Access to the Courtyard

**DIMENSIONS**

Room Size	112.5.m <sup>2</sup>
Length	15.0m
Width	6.4m
Height	2.3m

**CAPACITIES**

Maximum Capacity	100
Classroom	50
Boardroom	40
U-shape	40
Reception	100
Banquet	60
Dinner Dance	40
Theatre	80
Cabaret	40

**KING'S**  
(Ground Floor)

**FEATURES**  
Ground floor  
Natural Light  
Air Conditioning  
Access to the Courtyard

**DIMENSIONS**

Room Size	52.5.m <sup>2</sup>
Length	7.0m
Width	6.4m
Height	2.4m

**CAPACITIES**

Maximum Capacity	30
Classroom	12
Boardroom	15
U-shape	12
Reception	30
Banquet	0
Dinner Dance	0
Theatre	30
Cabaret	15

**QUEEN'S**  
(Ground Floor)

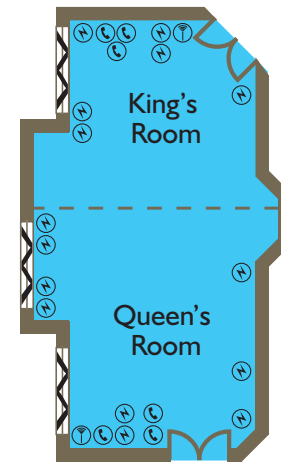
**FEATURES**  
Ground floor  
Natural Light  
Air Conditioning  
Access to the Courtyard

**DIMENSIONS**

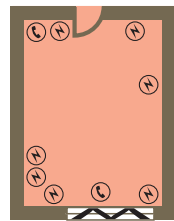
Room Size	56.2.m <sup>2</sup>
Length	7.5m
Width	6.4m
Height	2.4m

**CAPACITIES**

Maximum Capacity	40
Classroom	18
Boardroom	20
U-shape	15
Reception	40
Banquet	0
Dinner Dance	0
Theatre	40
Cabaret	20



**DARWIN ROOM**  
(Ground Floor)



**FEATURES**  
Ground floor  
Natural Light  
Air Conditioning

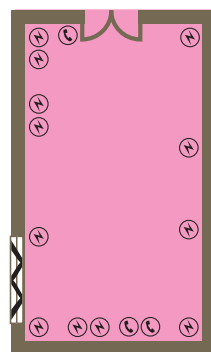
**DIMENSIONS**

Room Size	34.56.m <sup>2</sup>
Length	7.2m
Width	4.8m
Height	2.4m

**CAPACITIES**

Maximum Capacity	20
Classroom	12
Boardroom	15
U-shape	14
Reception	30
Banquet	20
Dinner Dance	0
Theatre	20
Cabaret	0

**MAGDALENE ROOM**  
(Ground Floor)



**FEATURES**  
Ground floor  
Natural Light  
Air Conditioning

**DIMENSIONS**

Room Size	74.7.m <sup>2</sup>
Length	11.5m
Width	6.5m
Height	2.3m

**CAPACITIES**

Maximum Capacity	80
Classroom	30
Boardroom	30
U-shape	30
Reception	80
Banquet	50
Dinner Dance	0
Theatre	80
Cabaret	35

**UNIVERSITY SUITE**  
(Ground Floor)

**FEATURES**  
Ground floor  
Natural Light  
Air Conditioning  
Access to the Terrace

**DIMENSIONS**

Room Size	237.4.m <sup>2</sup>
Length	21.2m
Width	9.5m
Height	2.8m

**CAPACITIES**

Maximum Capacity	250
Classroom	70
Boardroom	90
U-shape	80
Reception	300
Banquet	170
Dinner Dance	150
Theatre	250
Cabaret	80

**PETERHOUSE**  
(Ground Floor)

**FEATURES**  
Ground floor  
Natural Light  
Air Conditioning  
Access to the Terrace

**DIMENSIONS**

Room Size	174.7.m <sup>2</sup>
Length	15.6m
Width	11.2m
Height	2.8m

**CAPACITIES**

Maximum Capacity	200
Classroom	50
Boardroom	70
U-shape	60
Reception	200
Banquet	140
Dinner Dance	100
Theatre	180
Cabaret	60

**PEMBROKE**  
(Ground Floor)

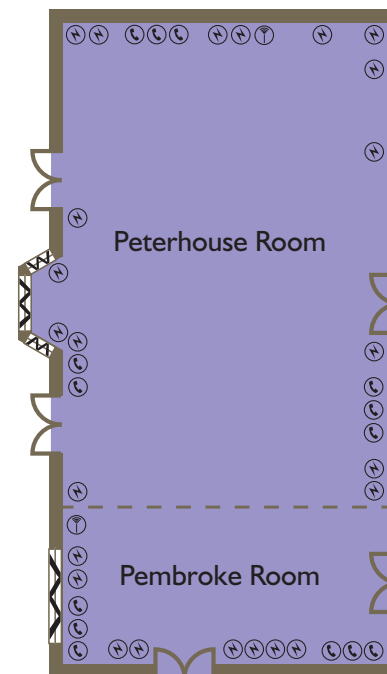
**FEATURES**  
Ground floor  
Natural Light  
Air Conditioning  
Access to the Terrace

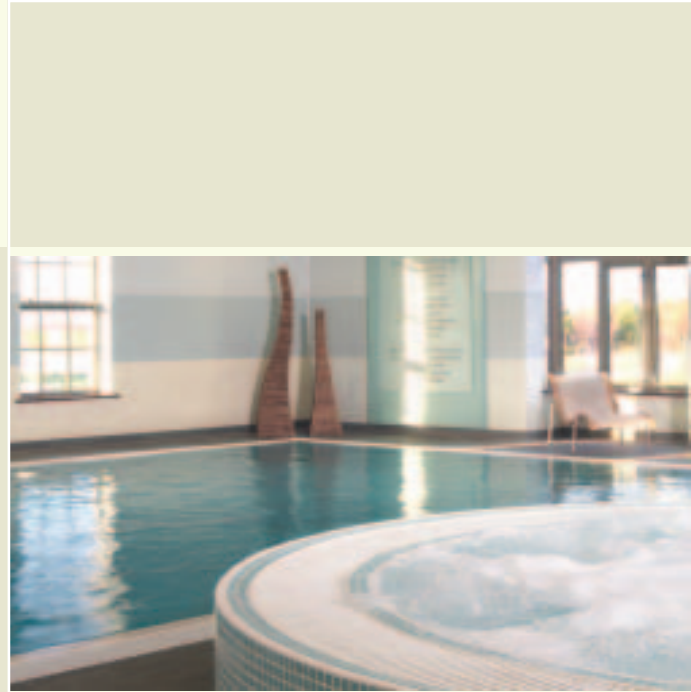
**DIMENSIONS**

Room Size	336.2.m <sup>2</sup>
Length	22.0m
Width	15.3m
Height	3.3m

**CAPACITIES**

Maximum Capacity	50
Classroom	20
Boardroom	20
U-shape	18
Reception	50
Banquet	30
Dinner Dance	0
Theatre	50
Cabaret	20





## RELAX AND UNWIND

Reflections - Health, Fitness and Spa has a well equipped gymnasium and luxurious heated swimming pool, spa, sauna and steam room.

Pamper yourself in Reflections Spa with a massage or one of the many other luxurious treatments on offer.

All our residential guests are invited to enjoy these extensive leisure facilities; so why not take a break from your meeting and enjoy a refreshing swim, raise your pulse rate in the gym or on the tennis court.

- Indoor swimming pool.
- Spa bath.
- Steam room.
- Sauna.
- State-of-the art gymnasium.
- Beauty Spa.
- Tennis Court.





## A COLLECTION OF PRESTIGIOUS HOTELS

Our portfolio comprises prestigious, deluxe properties throughout the UK, including our flagship hotel The Midland, one of the most historic and famous landmarks in Manchester, the prominent Queens in Leeds, the exquisite Park Royal in Warrington, the historic Crewe Hall in Cheshire, the magnificent Forest Pines Golf and Country Club Hotel in North Lincolnshire, and a number of hotels on the edge of some cosmopolitan cities including the Nottingham Belfry and the Oxford Belfry.

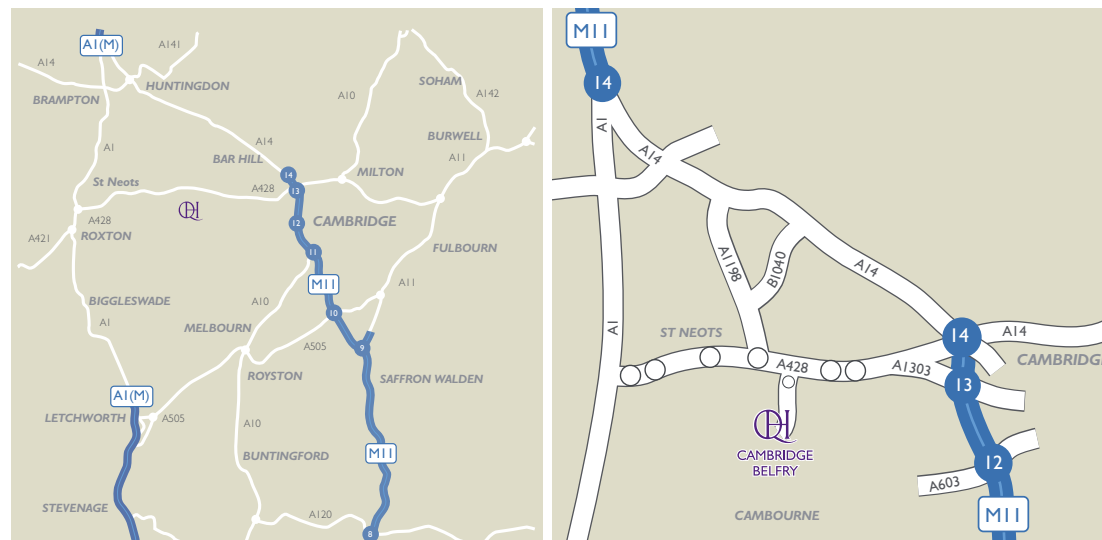
At QHotels we take historic, contemporary and beautiful hotels and invest not only in the buildings but also the teams within to ensure that all of our guests receive the most professional service and have an enjoyable experience.

For more information on all of our hotels visit:  
[www.qhotels.co.uk](http://www.qhotels.co.uk)



The Chesford Grange Warwickshire.

## HOW TO FIND CAMBRIDGE BELFRY



### BY ROAD

#### From the West/North A14

Exit at Junction 24 and follow the A198 signposted Royston through Papworth Everard. At the junction with the A428 take the first exit to Cambridge. Take the first slip road signposted Camboorne. As you enter Camboorne, the hotel is on the left hand side.

#### From the South M11

Exit at Junction 13 signposted A428. Take A1303 to the junction with the A428 and travel west to Bedford. Take the slip road on the left to Camboorne. As you enter Camboorne, the hotel is on the left hand side.

#### From the South A1

Exit at Junction with A428, branching left to Cambridge. After approximately 10 miles, take the slip road signposted Camboorne. As you enter Camboorne, the hotel is on the left hand side.

### BY RAIL

Cambridge Train Station - 11 miles.

### BY AIR

Luton Airport - 36 miles.

Stanstead Airport - 37 miles.

## CAMBRIDGE BELFRY

★★★★



Camboorne, Cambridge, CB23 6BW  
Tel: 01954 714600 Fax: 01954 714610  
Email: [cambridgebelfryevents@qhotels.co.uk](mailto:cambridgebelfryevents@qhotels.co.uk)  
[www.qhotels.co.uk](http://www.qhotels.co.uk)

To help us continually improve our service we may monitor and/or record your telephone calls with us.

# QHOTELS