

20

minutes from
5 motorways.

17

acres of stunning
grounds.

13

superb conference
rooms.

You. Us. Your event.
One of a kind.

QHOTELS
Chesford Grange
Kenilworth, Warwickshire
One of 21 outstanding QHotels.



Hotel Group of the Year
2008 - 2009





5

major motorways all within a 20-minute drive.

At Chesford Grange we do things on a grand scale. We have to. When you're in a really convenient central location close to the M40, M42, M6, M69 and M1 motorways, you've got room for over 700 delegates and you provide all the latest whizzy conference gadgets, you tend to attract some of the biggest names. Which is why we make sure that every inch of our luxurious hotel is fit for a king. Our 205 spacious bedrooms, our 13 contemporary conference and meeting rooms, our River Room restaurant, and our 17 acres of tranquil grounds and woodlands. It's also why we shelled out a king's ransom to maintain every corner of our luxurious hotel. Indeed, nothing has escaped our attention. Nor will a single detail of your event here. So, we'd like to welcome you to the most versatile, friendly and attentive conference facilities and team in the Midlands. Truly one of a kind.





- Just 20 minutes from the M40 and M69.
- 13 fully-equipped and flexible conference rooms.
- Space for 700 delegates in our Kenilworth Suite.
- 205 beautiful-appointed and spacious bedrooms
- Talented chefs and bespoke, mouth-watering menus.
- Free, continuous WiFi access for all 24-hour and day delegates.
- Leisure and spa facilities on site.
- 650 complimentary car parking spaces.
- 17 glorious acres for team building exercises.
- Leamington Spa train station only 4 miles away.
- Birmingham Airport only 18 miles away.

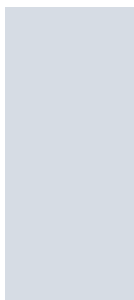


1,248

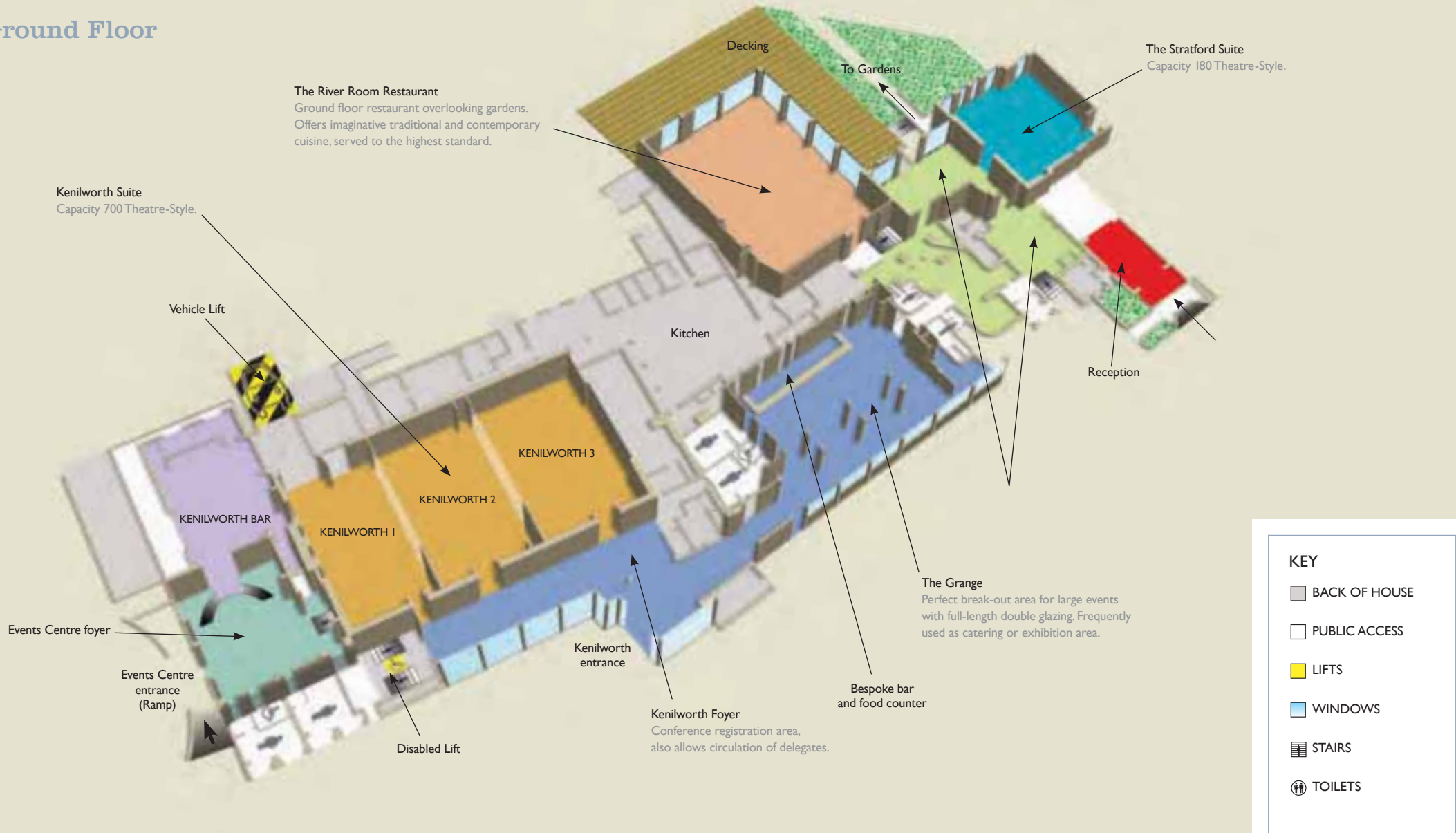
enthusiastic rounds of applause.



Where better to stage a dramatic or inspiring event than in the heart of Shakespeare Country? Particularly when our staff take their roles so seriously. But there are lots of other reasons why Chesford Grange is the perfect setting. Like a choice of 13 contemporary conference and meeting rooms for example. Most of which have air-con and blackout capabilities. The star of the show, the highly flexible Kenilworth Suite, can seat up to 700 delegates. 450 if you're throwing a banquet. But it isn't just our room layouts that are flexible. At Chesford Grange you'll find that we will bend over backwards to make your budget work too, and that we are incredibly accommodating when it comes to your itinerary. So even if all you need is a setting for off-site training, we have the talent and the creativity to turn it into an impeccable performance every time.

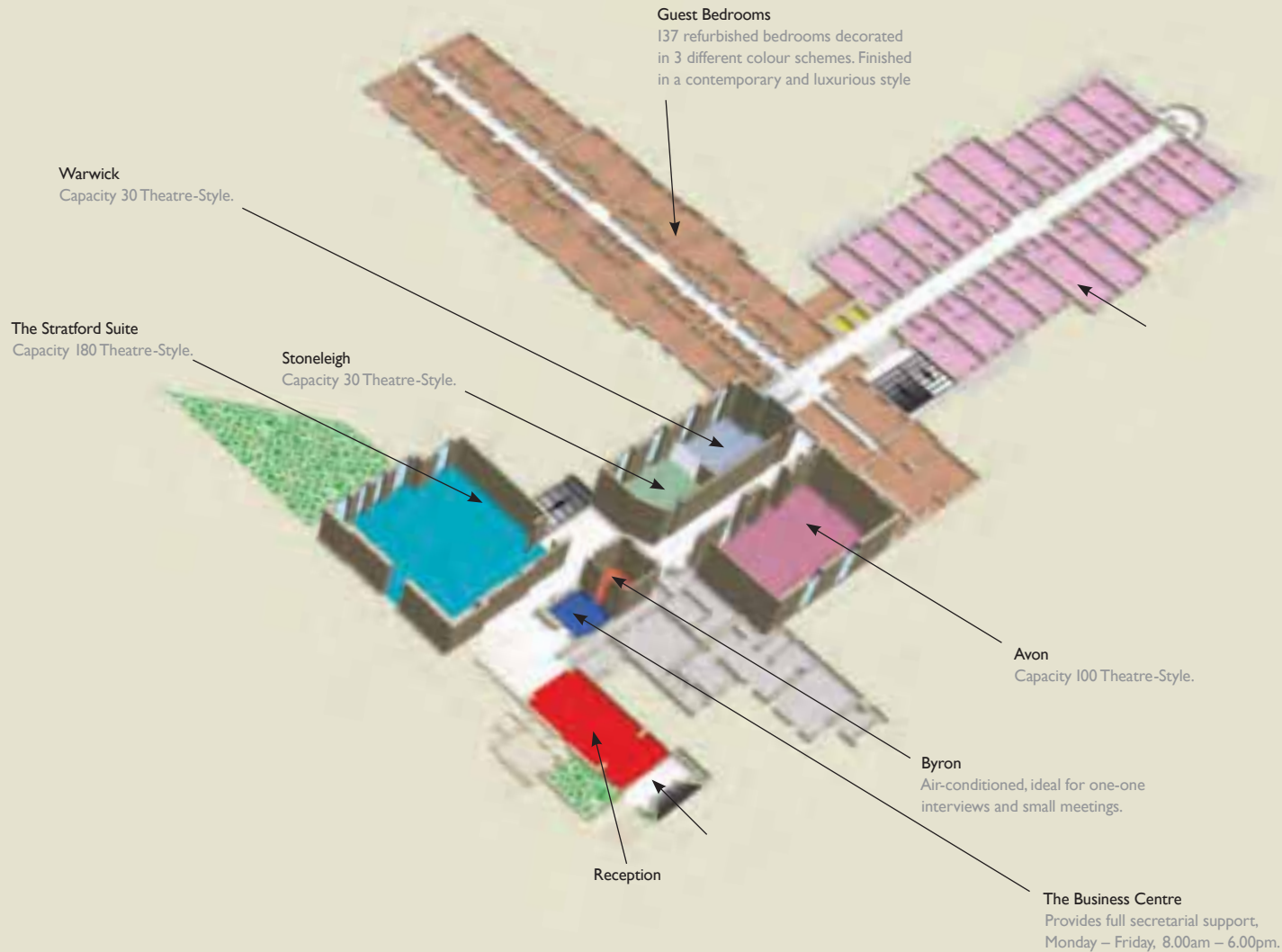


Ground Floor



Room	Size m ²	Length m	Width m	Height m	Cabaret	Theatre	Boardroom	U-Shape	Classroom	Banquet	Dinner Dance	Reception
Kenilworth	510.42	29	17.30	4.80	360	700	n/a	n/a	360	450	390	800
Kenilworth 1	130.70	7.50	17.30	4.80	80	140	n/a	n/a	80	90	60	200
Kenilworth 2 or 3	189.83	10.96	17.30	4.80	120	220	n/a	n/a	120	150	120	300

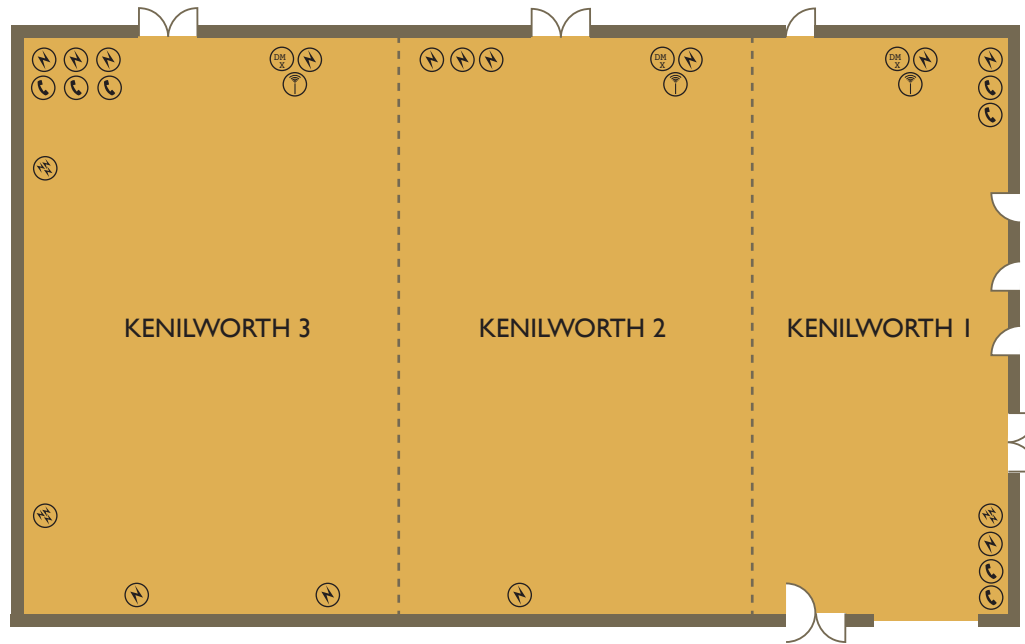
Ground Floor



700
delegates – with
space left to breathe.

Room	Size m ²	Length m	Width m	Height m	Cabaret	Theatre	Boardroom	U-Shape	Classroom	Banquet	Dinner Dance	Reception
Avon	110.40	13.80	8	2.35	56	100	40	40	60	80	60	100
Byron	14.44	3.80	3.80	2.40	n/a	n/a	4	n/a	n/a	n/a	n/a	n/a
Stratford	175.00	12.20	11.90	2.40	96	180	40	50	100	150	120	200
Stoneleigh	49.49	8.40	5.80	2.90	24	30	18	16	20	18	n/a	30
Warwick	45.11	7.70	5.80	2.90	24	30	18	16	20	18	n/a	30

Ground Floor



KENILWORTH SUITE (Ground Floor)

CAPACITIES 1

Maximum Capacity	200
Classroom	80
Boardroom	n/a
U-shape	n/a
Reception	200
Banquet	90
Dinner Dance	60
Theatre	140
Cabaret	80

DIMENSIONS (m)

Room Size	130.70m ²
Length	7.50
Width	17.30
Height	4.80

FEATURES

- Ground Floor
- Air Conditioning

CAPACITIES 2

Maximum Capacity	300
Classroom	120
Boardroom	n/a
U-shape	n/a
Reception	300
Banquet	150
Dinner Dance	120
Theatre	220
Cabaret	120

DIMENSIONS (m)

Room Size	189.83m ²
Length	10.96
Width	17.30
Height	4.80

FEATURES

- Ground Floor
- Air Conditioning

CAPACITIES 3

Maximum Capacity	300
Classroom	120
Boardroom	n/a
U-shape	n/a
Reception	300
Banquet	150
Dinner Dance	120
Theatre	220
Cabaret	120

DIMENSIONS (m)

Room Size	189.83m ²
Length	10.96
Width	17.30
Height	4.80

FEATURES

- Ground Floor
- Air Conditioning
- Drive a car into it

THE STRATFORD SUITE

(Ground Floor)

CAPACITIES

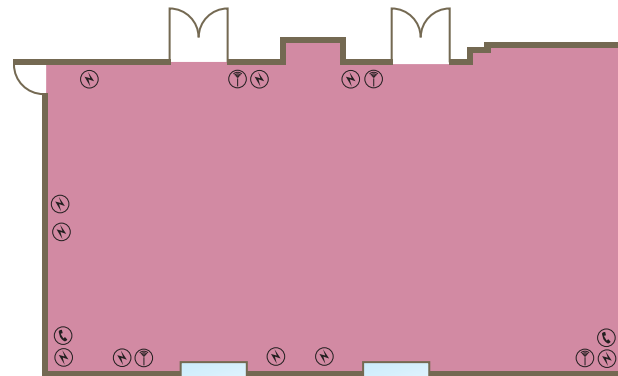
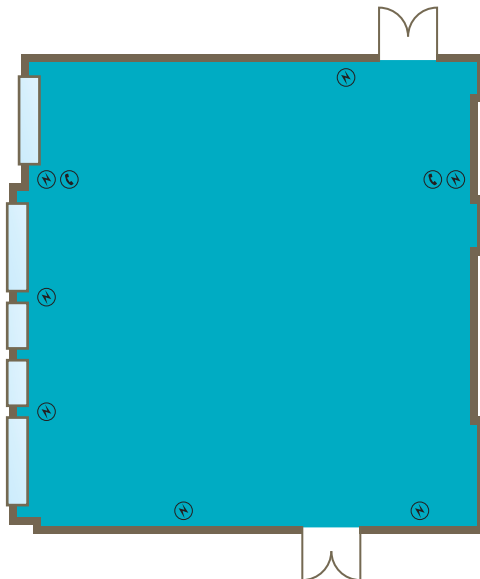
Maximum Capacity	200
Classroom	100
Boardroom	40
U-shape	50
Reception	200
Banquet	150
Dinner Dance	120
Theatre	180
Cabaret	96

DIMENSIONS (m)

Room Size	175m ²
Length	12.20
Width	11.90
Height	2.40

FEATURES

- Air Conditioning
- Natural Light
- Blackout curtains
- Direct access to the bar and terrace



THE AVON

(Ground Floor)

CAPACITIES

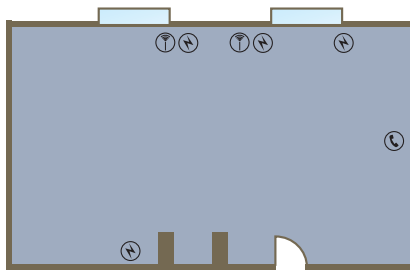
Maximum Capacity	100
Classroom	60
Boardroom	40
U-shape	40
Reception	100
Banquet	80
Dinner Dance	60
Theatre	100
Cabaret	56

DIMENSIONS (m)

Room Size	110.40m ²
Length	13.80
Width	8
Height	2.35

FEATURES

- Air Conditioning
- Natural Light
- Blackout curtains



THE WARWICK

(Ground Floor)

CAPACITIES

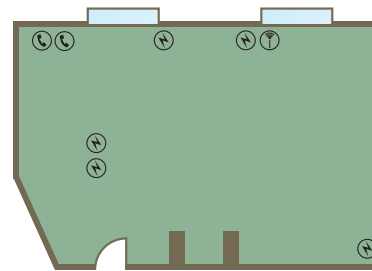
Maximum Capacity	30
Classroom	20
Boardroom	18
U-shape	16
Reception	30
Banquet	18
Dinner Dance	n/a
Theatre	30
Cabaret	24

DIMENSIONS (m)

Room Size	45.11m ²
Length	7.70
Width	5.80
Height	2.90

FEATURES

Air Conditioning
Natural Light
Blackout curtains



THE STONELEIGH

(Ground Floor)

CAPACITIES

Maximum Capacity	30
Classroom	20
Boardroom	18
U-shape	16
Reception	30
Banquet	18
Dinner Dance	n/a
Theatre	30
Cabaret	24

DIMENSIONS (m)

Room Size	49.49m ²
Length	8.40
Width	5.80
Height	2.90

FEATURES

Air Conditioning
Natural Light
Blackout curtains

First Floor

THE BYRON

(Ground Floor)

CAPACITIES

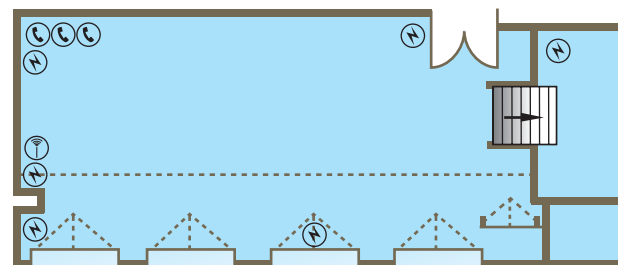
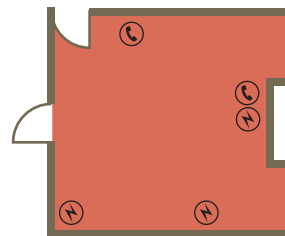
Maximum Capacity	4
Classroom	n/a
Boardroom	4
U-shape	n/a
Reception	n/a
Banquet	n/a
Dinner Dance	n/a
Theatre	n/a
Cabaret	n/a

DIMENSIONS (m)

Room Size	14.44m ²
Length	3.80
Width	3.80
Height	2.40

FEATURES

Air Conditioning



THE DIRECTORS SUITE

(First Floor)

CAPACITIES

Maximum Capacity	50
Classroom	30
Boardroom	25
U-shape	25
Reception	40
Banquet	n/a
Dinner Dance	n/a
Theatre	50
Cabaret	32

DIMENSIONS (m)

Room Size	58.30m ²
Length	11
Width	5.30
Height	2.90

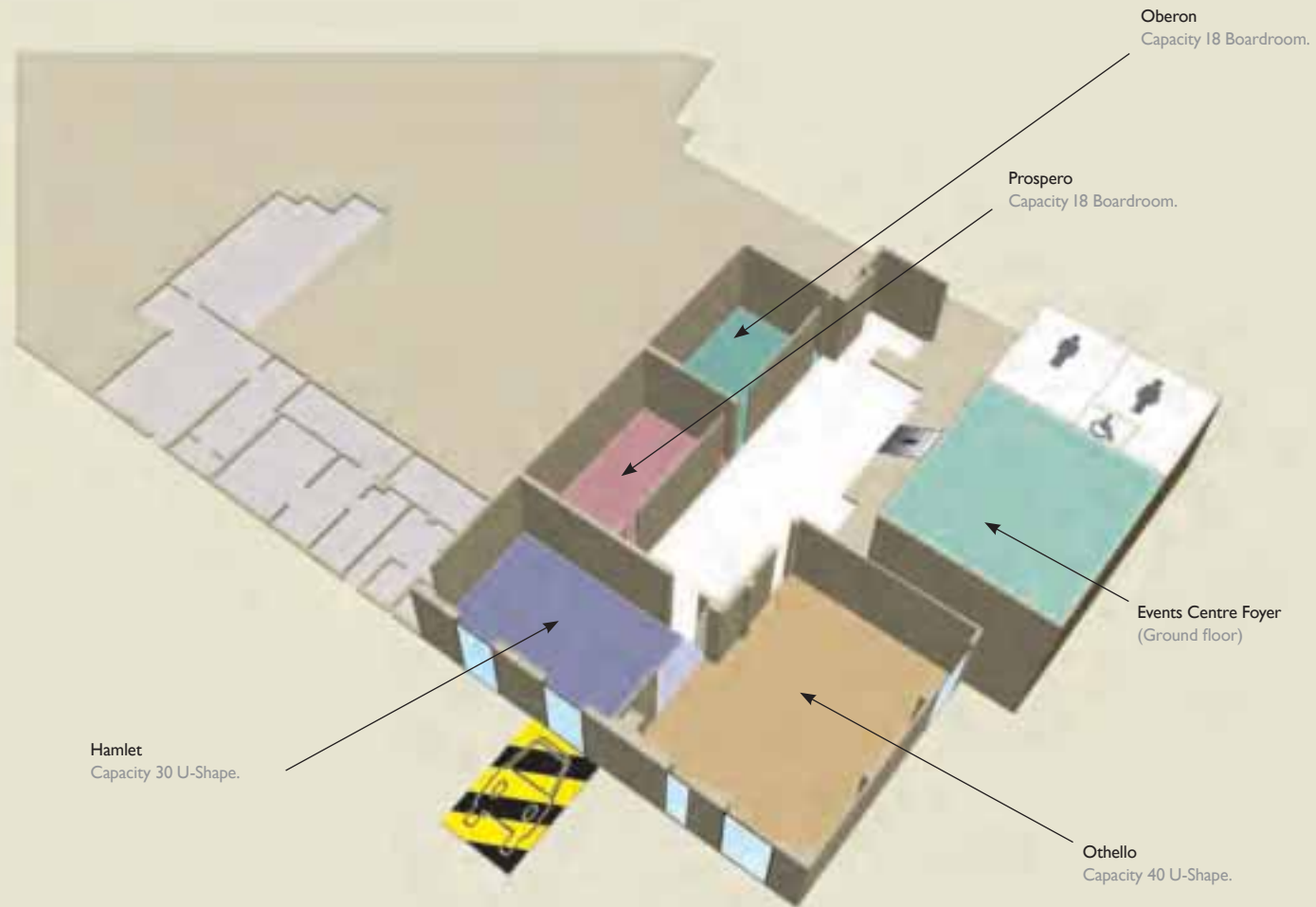
FEATURES

Air Conditioning
Natural Light

KEY

TELEPHONE POINT	AERIAL POINT
POWER SUPPLY	MICROPHONE SOCKET

Lower Ground Floor Shakespeare Suites



KEY

- BACK OF HOUSE
- PUBLIC ACCESS
- LIFTS
- WINDOWS
- STAIRS
- ♿ TOILETS

Room	Size m ²	Length m	Width m	Height m	Cabaret	Theatre	Boardroom	U-Shape	Classroom	Banquet	Dinner Dance	Reception
Hamlet	69	10.10	6.90	2.30	48	60	30	30	40	60	30	60
Othello	108.76	12.73	8.53	2.20	64	100	40	40	60	100	80	100
Prospero	46.10	9.04	5.10	2.30	24	30	18	16	20	n/a	n/a	30
Oberon	41.30	8.10	5.10	2.30	24	30	18	16	20	n/a	n/a	30

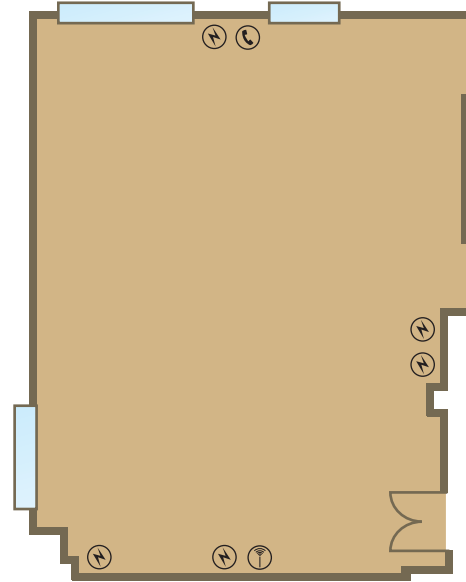
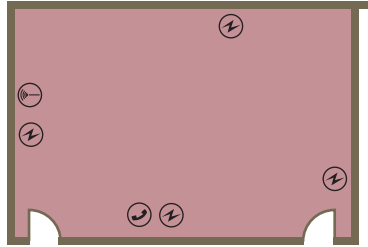
Lower Ground Floor

THE PROSPERO

CAPACITIES	
Maximum Capacity	30
Classroom	20
Boardroom	18
U-shape	16
Reception	30
Banquet	n/a
Dinner Dance	n/a
Theatre	30
Cabaret	24

DIMENSIONS (m)	
Room Size	46.10m ²
Length	9.04
Width	5.1
Height	2.30

FEATURES
Air Conditioning



THE OTHELLO

CAPACITIES	
Maximum Capacity	100
Classroom	60
Boardroom	40
U-shape	40
Reception	100
Banquet	100
Dinner Dance	80
Theatre	100
Cabaret	64

DIMENSIONS (m)	
Room Size	108.76m ²
Length	12.73
Width	8.53
Height	2.20

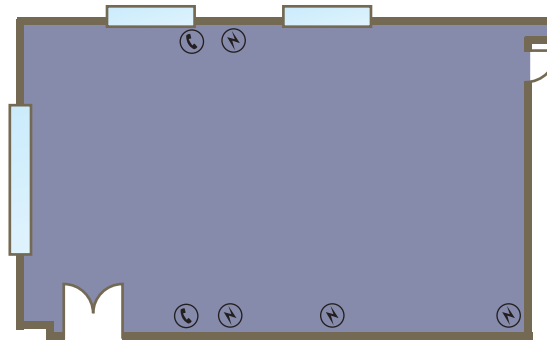
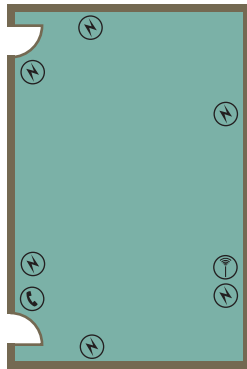
FEATURES
Air Conditioning
Natural Light
Blackout curtains

THE OBERON

CAPACITIES	
Maximum Capacity	30
Classroom	20
Boardroom	18
U-shape	16
Reception	30
Banquet	n/a
Dinner Dance	n/a
Theatre	30
Cabaret	24

DIMENSIONS (m)	
Room Size	41.30m ²
Length	8.10
Width	5.10
Height	2.30

FEATURES
Air Conditioning



THE HAMLET

CAPACITIES	
Maximum Capacity	60
Classroom	40
Boardroom	30
U-shape	30
Reception	60
Banquet	60
Dinner Dance	30
Theatre	60
Cabaret	48

DIMENSIONS (m)	
Room Size	69m ²
Length	10.1
Width	6.9
Height	2.30

FEATURES
Air Conditioning
Natural Light
Blackout curtains

KEY

-  TELEPHONE POINT
-  AERIAL POINT
-  POWER SUPPLY
-  MICROPHONE SOCKET

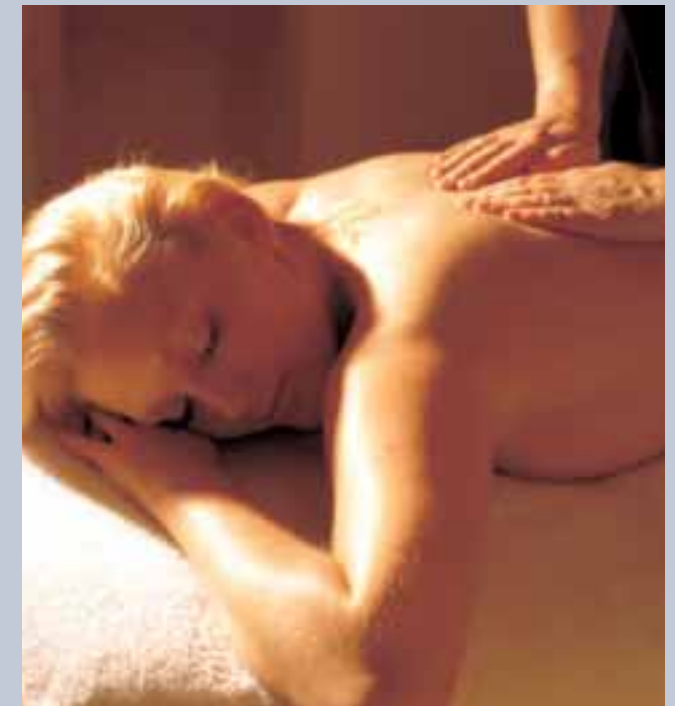
4

inspiring suites
to stage your event.

21

steps to heaven.

That's how far you have to walk from the lift to the spa. We keep it short because we know how tiring these conferences can be. With each step you begin to feel the stresses of the day slowly melting away. You've got it all planned out. A dip in the luxurious spa pool, then a soothing aromatherapy massage. Bliss. On the other hand, perhaps the last thing you need after sitting in a chair all day (albeit a very comfortable one) is to take it easy. Maybe an intensive cardiovascular work-out is your idea of winding down. You may like to sample the myriad attractions that surround us (they don't call it the Heart of England for nothing). In one direction you've got the majestic Warwick Castle. In another, the equally impressive Kenilworth Castle. And if shopping is your thing, nearby Royal Leamington Spa rules supreme. Either way, by the time you retire to your plush and beautifully spacious bedroom, you'll be relaxed, revived and ready to face the world once more.





12

different varieties of tea and coffee to choose from.



Whether you help yourself from the breakout area or we bring your refreshments to you, our sugar-boosting, energy-building snacks coupled with endless amounts of freshly brewed coffee and tea make sure that you're fully refreshed and energised. And when you've had your caffeine fix for the day, a wide selection of green and fruit teas are always available to make sure you keep your thirst at bay. As for meals, it's good to leave the meeting room, so if you've got time why not enjoy a networking lunch in the stylish River Room Restaurant? Or if you're pushed and need to work through, a business buffet can be brought to you in a jiffy. Flexibility is the name of the game, so whatever kind of lunch or evening meal experience you want, we'll have a tailor-made solution that caters for you. There's a private room if you want to really make sure the team gets to know each other, a separate area of the restaurant that we can put at your disposal if you want to dine from the mouth-watering menu, or you can decide to delight in a themed Indian evening or a summer barbeque on the terrace whilst you watch the nearby River Avon flow gently by.

17

acres of spectacular grounds for team building.

Chesford Grange is blessed with 17 acres of superb grounds which provide a truly idyllic setting for the occasional post-dinner stroll and, most importantly of all, endless opportunities for the fun and games that are team building. And while we provide the excellent setting for motivational exercises such as falconry, archery and clay pigeon shooting, our highly experienced and professional partners provide all the know-how and expertise to make sure that the fun is translated into tangible results. It is, as the saying goes, a one-stop shop solution that should satisfy even the most adventurous team-building plans, and ensure your team is a lean, mean working machine.



4

ways of getting total peace of mind.

Our Total Meetings Package offers four different ways of tailoring our offering to your needs, and depending on the package can include everything from rooms, facilities and support, to meals and accommodation. It's an excellent way of ensuring that you get precisely what you need and at an all-inclusive price with no hidden extras. It even includes free 24-hour Wi-Fi access for all your delegates. How totally cool is that?

Directions

From the south, leave the M40 at Junction 15. Follow the A46 towards Coventry and take the slip road signposted Kenilworth and Leamington Spa (A452). At the roundabout, take the right exit signposted Leamington Spa. Continue for 400 yards and follow the signs to the hotel.

From the north, at Junction 21 of the M1, follow the M69 towards Coventry and join the A45. Take the first junction off and join the A46 towards Warwick. Take the slip road signposted A452. At the roundabout, take the first exit signposted Leamington Spa and follow the signs to the hotel.

BY RAIL

Leamington Spa Train Station – 4 miles.
Warwick Train Station – 8 miles.

BY AIR

Birmingham International Airport – 18 miles.

For reservations and general enquiries please call 01926 859331
Email: chesfordevents@QHotels.co.uk
or visit www.QHotels.co.uk



The gorgeousness doesn't end here. There are 20 other QHotels to visit across the country.

**The Westerwood
Hotel & Golf Resort**
Nr Glasgow

**Aldwark Manor
Golf & Spa Hotel**
York

The Queens
Leeds

Tankersley Manor
Tankersley, Nr Sheffield

The Midland
Manchester

The Park Royal
Stretton, Cheshire

Crewe Hall
Crewe, Cheshire

**Forest Pines
Hotel & Golf Resort**
North Lincolnshire

The Nottingham Belfry
Nottingham

Telford Hotel & Golf Resort
Shropshire

Stratford Manor
Stratford-upon-Avon

The Stratford
Stratford-upon-Avon

**Hellidon Lakes
Golf & Spa Hotel**
Hellidon, Northamptonshire

The Cambridge Belfry
Cambourne, Cambridge

The Cheltenham Chase Hotel
Gloucestershire

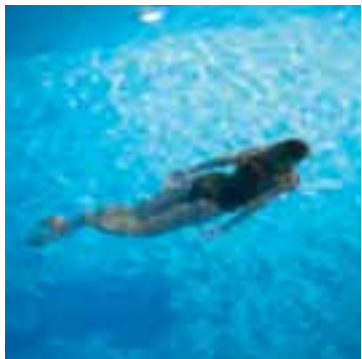
The Oxford Belfry
Thame, Oxford

The Hampshire Court Hotel
Basingstoke, Hampshire

Norton Park
Winchester, Hampshire

Bridgewood Manor
Chatham, Kent

Ashford International Hotel
Ashford, Kent



Chesford Grange
Kenilworth
Nr Warwick CV8 2LD.

Tel: 01926 859331
Fax: 01926 855272

Email: chesfordevents@QHotels.co.uk
www.QHotels.co.uk

Galileo – QH66857
Sabre – QH37053

Amadeus – QHBHXCHE
Worldspan – QH24526

QHOTELS

You can take advantage of all we have to offer secure in the knowledge that everything we do at QHotels ensures a positive approach to our staff, our community and the environment.



Hotel Group of the Year
2008 - 2009