

21

promises of the
ultimate conference,
meeting or event.
One of a kind.

QHOTELS

The Cambridge Belfry

Cambourne, Cambridge

One of 21 outstanding QHotels.



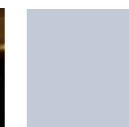
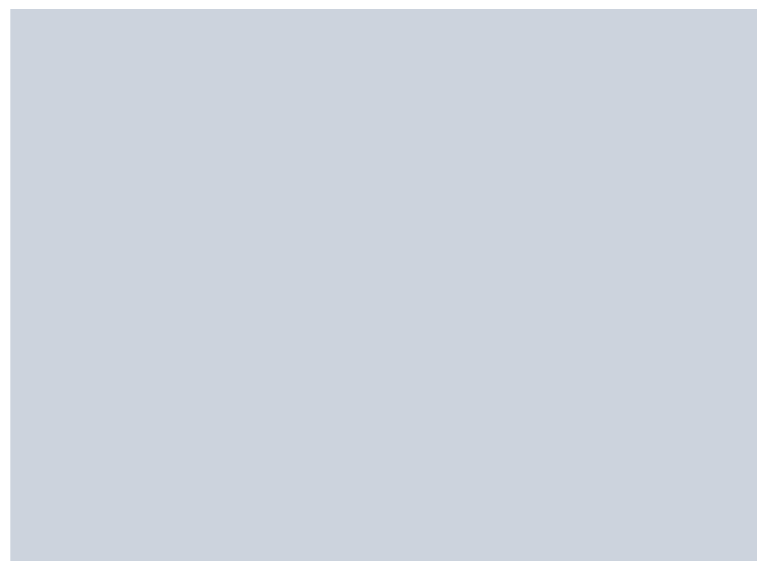
Hotel Group of the Year
2008 - 2009





Some people think you can bung a water carafe in a room, rig up a white board and call it open for business. But we know exactly how much time and money – not to mention how much of your reputation – is invested in conferences, meetings and events.

So you can come to us with confidence never doubting for a second that we're behind you all the way. Here on Cambridge's doorstep, minutes from the M11, we're ready and waiting for you – primed, prepared and professional to the last detail. In the corporate world, we're one of a kind.



898

events held in the last year.

100

different combinations
of set-up available.

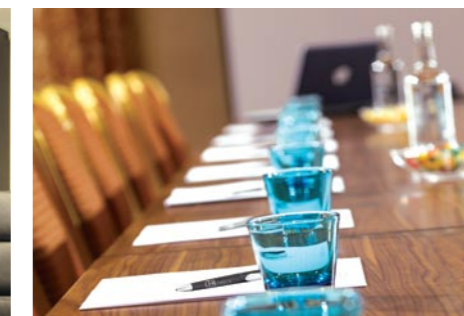


- 11 conference suites.
- Maximum capacity is in the University Suite, which seats a generous 250 theatre-style.
- Versatile and spacious rooms, perfect for any corporate or social event.
- Team-building activities in the grounds welcome.
- Edge-of-a-village location 6 miles from the M11, 8 miles from Cambridge.
- Dedicated Events Manager.
- 2 hours' free internet usage in all bedrooms.
- Let us create bespoke banqueting menus - or dine in our award-winning restaurant.
- 120 bedrooms to restore tired delegates.

Your wish, our command.

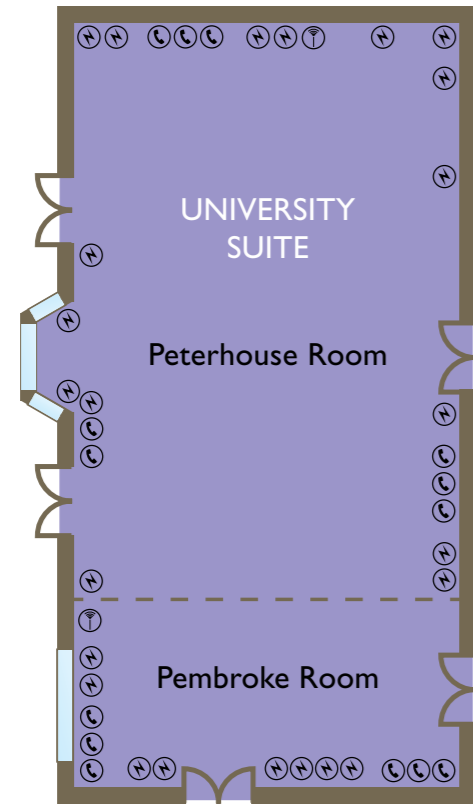
Geographically, we're blessed. Conveniently sited between the A1 and M11, handy as a middle-of-the-country meeting point and well out of town – which means well away from traffic snarl-ups and the tyranny of the parking ticket. Once you arrive, we can show you to whichever of our 11 well-equipped meeting rooms suits you best. Including the one that will accommodate 249 other people, all at the same time.

Your room will, of course, be laid out however you want it. The food will be served whenever you ask for it. The coffee will be piping hot and delicious. And your allocated staff member, who knows how everything plugs in and switches on, will be on standby all day long. And into the evening too if required – after which your delegates may appreciate one of our 120 fantastic bedrooms. Or, if they're a key customer, one of six even more fantastic penthouse suites.



KEY

- ☎ TELEPHONE POINT
- ⚡ POWER SUPPLY
- 📶 AERIAL POINT
- 🎤 MICROPHONE SOCKET

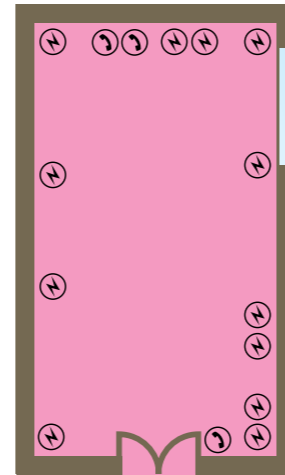


UNIVERSITY SUITE (Ground Floor)

- | | | |
|-------------------------|-------------------|-------------------|
| UNIVERSITY SUITE | PETERHOUSE | PEMBROKE |
| LIGHTING | LIGHTING | LIGHTING |
| Controls in Room | Controls in Room | Controls in Room |
| Tungsten | Tungsten | Tungsten |
| Blackout | Dimmers | Dimmers |
| Natural Light | Blackout | Blackout |
| | Natural Light | Natural Light |
| GENERAL | GENERAL | GENERAL |
| Sound System | Sound System | Sound System |
| 3 Phase | Microphone Points | 3 Phase |
| Microphone Points | Air Conditioning | Microphone Points |
| Air Conditioning | | Air Conditioning |

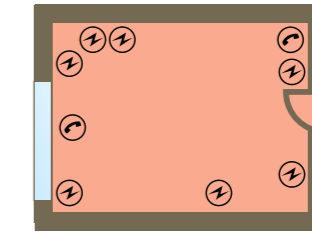
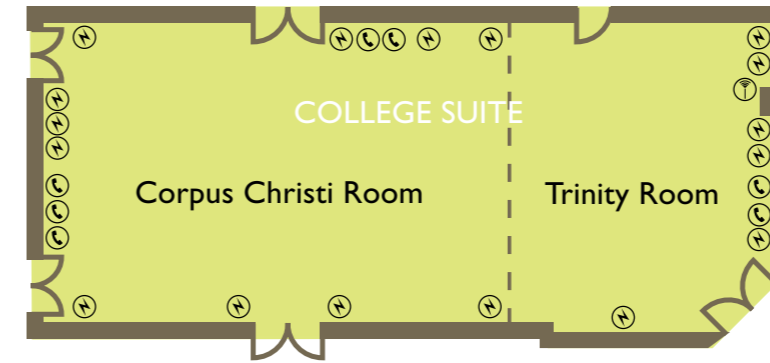
MAGDALENE ROOM (Ground Floor)

- LIGHTING**
- Controls in Room
 - Tungsten
 - Dimmers
 - Blackout
 - Natural Light
- GENERAL**
- Air Conditioning



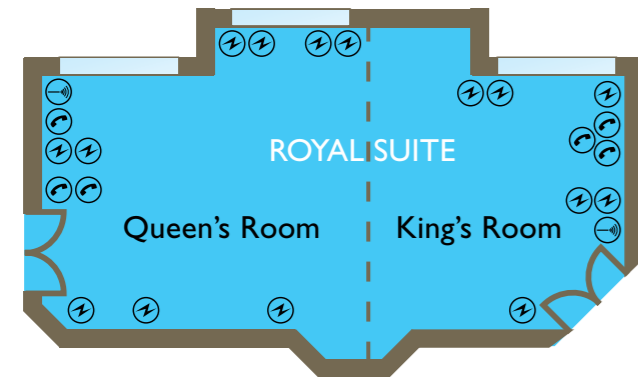
COLLEGE SUITE (Ground Floor)

- | | | |
|----------------------|-----------------------|------------------|
| COLLEGE SUITE | CORPUS CHRISTI | TRINITY |
| LIGHTING | LIGHTING | LIGHTING |
| Controls in Room | Controls in Room | Controls in Room |
| Blackout | Blackout | Blackout |
| Natural Light | Natural Light | Natural Light |
| | | |
| GENERAL | GENERAL | GENERAL |
| Air Conditioning | Air Conditioning | Air Conditioning |
| Sound System | Sound System | Sound System |



DARWIN ROOM (Ground Floor)

- LIGHTING**
- Controls in Room
 - Tungsten
 - Dimmers
 - Blackout
 - Natural Light
- GENERAL**
- 3 Phase
 - Microphone Points
 - Air Conditioning



ROYAL SUITE (Ground Floor)

- | | | |
|--------------------|------------------|------------------|
| ROYAL SUITE | KINGS | QUEENS |
| LIGHTING | LIGHTING | LIGHTING |
| Controls in Room | Controls in Room | Controls in Room |
| Blackout | Blackout | Blackout |
| Natural Light | Natural Light | Natural Light |
| | | |
| GENERAL | GENERAL | GENERAL |
| Air Conditioning | Air Conditioning | Air Conditioning |
| Sound System | Sound System | Sound System |

Room	Size m ²	Length m	Width m	Height m	Cabaret	Theatre	Boardroom	U-Shape	Classroom	Banquet	Dinner Dance	Reception
University Suite	237.4	23.2	11.3	2.8	80	250	n/a	n/a	64	180	160	300
Peterhouse	174.7	17.7	11.3	2.8	60	180	40	50	48	140	120	220
Pembroke	62.15	11.3	5.5	2.8	24	50	20	18	20	30	n/a	60
College Suite	185.12	20.7	8.8	2.3	60	150	n/a	n/a	48	130	90	160
Corpus Christi	128.16	14.33	8.8	2.3	50	100	30	38	36	80	50	140
Trinity	59.6	8.8	6.4	2.3	20	40	20	20	16	20	n/a	n/a
Royal Suite	112.5	14.6	6.4	2.3	45	80	30	30	28	60	50	80
Queens	56.2	7.62	6.4	2.3	18	40	14	15	12	15	n/a	35
Kings	52.5	7.0	6.4	2.3	18	40	14	12	12	15	n/a	35
Magdalene	74.7	11.5	6.5	2.3	30	70	28	20	16	n/a	n/a	70
Darwin	34.56	7.2	4.8	2.4	n/a	20	12	n/a	n/a	n/a	n/a	n/a

25

seconds from the lift
to the spa.



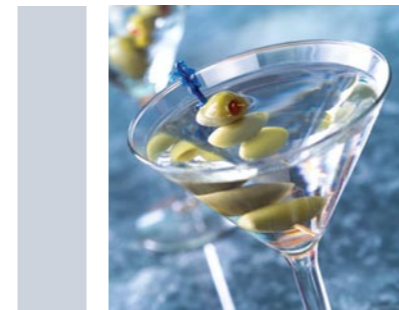
Down in the gym, where the fiendish fitness machines lurk, we often find our guests working away. And we know exactly what they're thinking. They're thinking 'five more minutes and I'll have earned a little AA rosette award-winning cuisine.' Which, by a stunning coincidence, is precisely what we serve in the Bridge restaurant. See those people ploughing up and down the pool? They've got a delicious meal in mind too.

Not that exertion is the only key to getting a table. We're equally happy to serve you if all you've done is lie down for an hour while the skilled beauty and therapy experts in our spa treat you like the Queen of Sheba. Or the King of Siam. Chef appreciates it when the hands that wield a knife and fork over his food are freshly manicured.



83

carefully selected wines
to accompany your meal.



Ah, the sound of cork being expertly extracted from the neck of a particularly fine bottle of Pinot Noir. It's enough to make you weep. And here at our Bridge Bar and Restaurant you can be sure that our astoundingly well-stocked cellar is full of wines capable of bringing a tear to the eye. As are the mind-bogglingly delicious dishes that our gifted and imaginative chefs prepare each and every day. With the emphasis on good, honest, wholesome fare, their creations never fail to impress, or satisfy. So as your conference draws inexorably towards its highly successful conclusion, don't be surprised if more than a couple of minds start wandering to the delights of the evening ahead.

3,500

years of history to enjoy.



This being Cambridge, you will never be at a loss for ways to enjoy yourself. From pre-historic remains to the trendiest 21st-century clubs and bars, the city boasts a cornucopia of truly disparate things for you to see, do, explore and delight in. Of course, it would be a brave man who came here and didn't bother having a look at the university (unless he'd actually been there as a student of course, in which case it could be a bit boring). But beyond the hallowed cloisters and grounds of one of the world's oldest and most revered seats of learning, the inquisitive visitor will find no end of distractions to round off a perfect stay in this magnificent part of England.



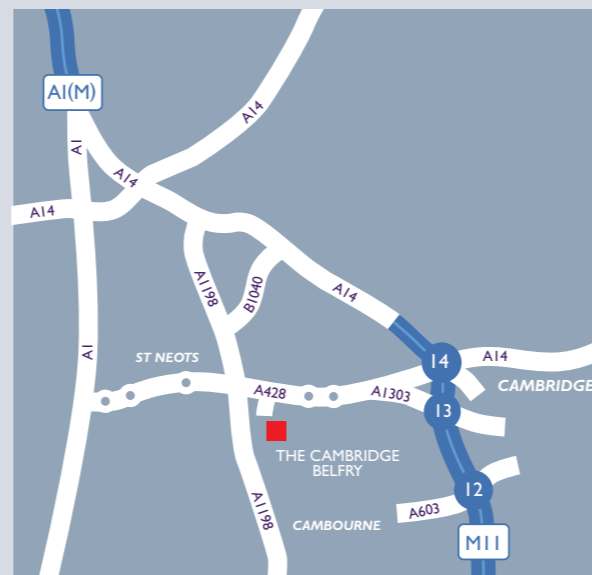
Directions

From the west/north A14, exit at J24. Follow the A1198 (Royston) through Papworth Everard. Exit at the A428 (Cambridge). Take the first slip road signposted Cambourne. In Cambourne, the hotel is on the left.

From the south M11, exit at J13 (A428). Take A1303 to A428 towards Bedford. Take the slip road on the left to Cambourne. As you enter Cambourne, the hotel is on the left-hand side.

From the south A1, exit at the A428 (Cambridge). Take the slip road signposted Cambourne. As you enter Cambourne, the hotel is on the left.

For reservations and general enquiries please call 01954 714600 or visit www.QHotels.co.uk



The gorgeousness doesn't end here. There are 20 other QHotels to visit across the country.

The Westerwood Hotel & Golf Resort
Nr Glasgow

Aldwark Manor Golf & Spa Hotel
York

The Queens
Leeds

Tankersley Manor
Tankersley, Nr Sheffield

The Midland Manchester

The Park Royal
Stretton, Cheshire

Crewe Hall
Crewe, Cheshire

Forest Pines Hotel & Golf Resort
North Lincolnshire

The Nottingham Belfry
Nottingham

Telford Hotel & Golf Resort
Shropshire

Stratford Manor
Stratford-upon-Avon

The Stratford
Stratford-upon-Avon

Chesford Grange
Kenilworth, Warwickshire

Hellidon Lakes Golf & Spa Hotel
Hellidon, Northamptonshire

The Cheltenham Chase Hotel
Gloucestershire

The Oxford Belfry
Thame, Oxford

The Hampshire Court Hotel
Basingstoke, Hampshire

Norton Park
Winchester, Hampshire

Bridgewood Manor
Chatham, Kent

Ashford International Hotel
Ashford, Kent



The Cambridge Belfry
Cambourne
Cambridge
Cambridgeshire CB23 6BW

Tel: 01954 714600
Fax: 01954 714610

Email: eastsalesoffice@QHotels.co.uk
www.QHotels.co.uk

Galileo – QH71920
Sabre – QH58524

Amadeus – QHCBGCBF
Worldspan – QH43469



You can take advantage of all we have to offer secure in the knowledge that everything we do at QHotels ensures a positive approach to our staff, our community and the environment.



Hotel Group of the Year
2008 - 2009