

21

promises of the
ultimate conference,
meeting or event.
One of a kind.

QHOTELS

The Park Royal

Warrington, Cheshire

One of 21 outstanding QHotels.



Hotel Group of the Year
2008 - 2009

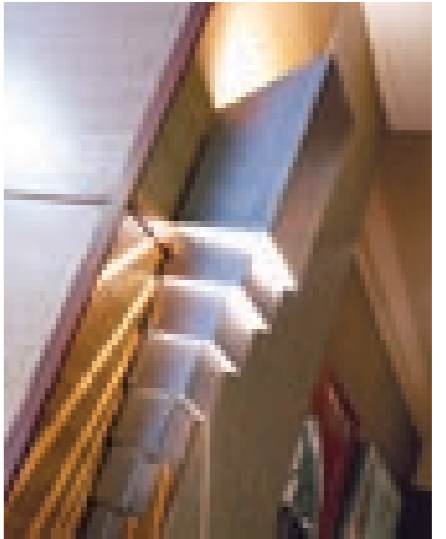




275
yards from the M56.



We know that most people find having to organise a conference or event a right royal pain in the derrière. So let the team here at The Park Royal make it easy for you. We're beautifully equipped, well-located (the M56 is literally yards away), expertly run and highly experienced – a 100% safe bet for whatever it is you've been asked to set up. There, that's the choice of venue sorted out. So no matter what the day brings, it's sure to be a success – because we're one of a kind.



3

prestigious awards
for business facilities.

Versatility by the very-well-equipped roomful.

Like a gold-medal gymnast, we find flexibility the key to success. With 15 rooms to do with as you please – and up to 400 people in our biggest – we reckon we've got every possibility covered, from an annual board meeting to an awards ceremony banquet. Not that we're just there for the grand affairs – we'll happily accommodate you even if all your delegates fit into one car.

At least fewer delegates means fewer people angling for seconds at the buffet. Given the quality of our food – not to mention the welcome freshness of our coffee – seconds are always in demand. As are our 146 super-comfy bedrooms, for people whose business life doesn't stop at 5.30. The queue for our helipad, however, is never very long. Funny that.



- 15 conference suites, with a maximum theatre-style capacity of 400 in the Royal.
- Generously-sized and versatile rooms for all corporate and social occasions.
- Extensive grounds for external team-building activities.
- Excellent location 275 yards off the M56, 20 or so miles from both Chester and Manchester.
- Dedicated Events Manager.
- 2 hours' free WiFi in all bedrooms.
- We'll create bespoke banqueting menus – or you can dine in one of our restaurants.
- 146 bedrooms to rest the tired business brain and body.



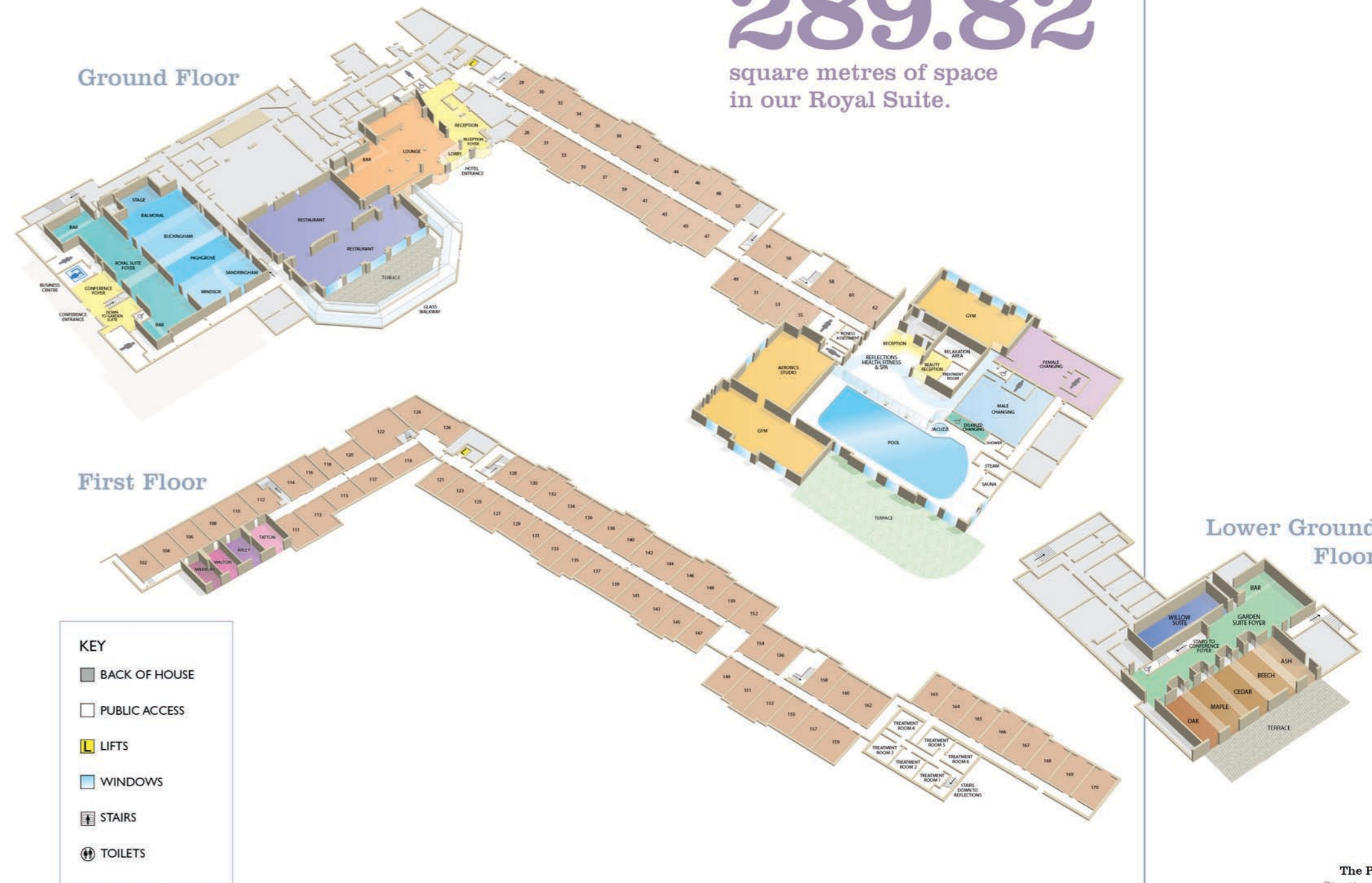
You've got the what – we've got the where.

Mucking about – sorry, team-building – seems to be a very popular outdoor pursuit these days. And we've got two-and-half acres of outdoors to do it in. But if you're more interested in traditional facilities, like walls and ceilings, just pick a room. Or tell us why you want it, and we'll pick one for you.

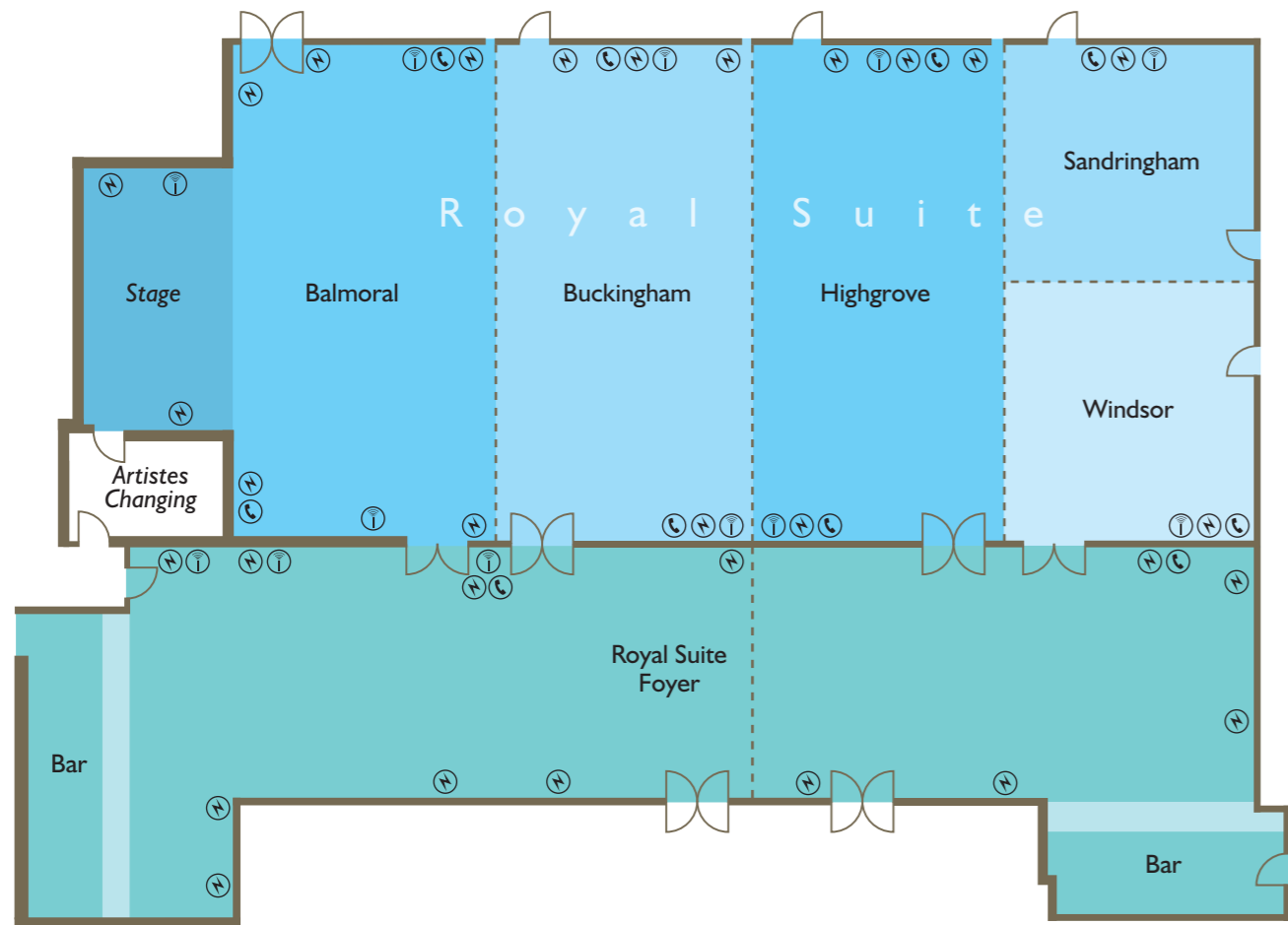


289.82

square metres of space in our Royal Suite.



Room	Size m ²	Length m	Width m	Height m	Cabaret	Theatre	Boardroom	U-Shape	Classroom	Banquet	Dinner Dance	Reception
Royal Suite	292.82	12.1	24.2	4.0	184	400	90	85	180	380	340	500
Balmoral	73.81	12.1	6.1	4.0	35	80	36	30	36	80	n/a	80
Balmoral & Buckingham	147.62	12.1	12.2	4.0	80	170	50	45	80	160	100	200
Balmoral, Buckingham & Highgrove	221.43	12.1	18.3	4.0	126	280	70	60	120	250	180	320
Sandringham or Windsor	37.21	6.1	6.1	4.0	n/a	25	15	12	12	n/a	n/a	20
Garden Suite	136.8	7.6	18	2.8	84	160	54	56	80	160	130	200
Ash	27.36	7.6	3.6	2.8	n/a	25	15	n/a	9	n/a	n/a	20
Ash & Beech	54.72	7.6	7.2	2.8	24	50	24	18	24	50	n/a	50
Ash, Beech & Cedar	82.08	7.6	10.8	2.8	40	85	33	30	40	75	50	85
Ash, Beech, Cedar & Maple	109.44	7.6	14.4	2.8	70	120	44	42	56	110	85	125
Willow	49.45	11.5	4.3	2.8	24	50	30	20	18	40	n/a	45
Tatton	29.1	6.0	4.85	2.3	n/a	18	10	n/a	n/a	n/a	n/a	n/a
Arley	26.88	6.25	4.3	2.3	n/a	n/a	10	n/a	n/a	n/a	n/a	n/a
Marbury	21.56	6.25	3.45	2.3	n/a	n/a	8	n/a	n/a	n/a	n/a	n/a
Walton	21.56	6.25	3.45	2.3	n/a	n/a	8	n/a	n/a	n/a	n/a	n/a



ROYAL SUITE
(Ground Floor)

CAPACITIES

Maximum Capacity	500
Classroom	180
Boardroom	90
U-shape	85
Reception	500
Banquet	380
Dinner Dance	340
Theatre	400
Cabaret	184

DIMENSIONS (m)

Room Size	292.82m ²
Length	12.1
Width	24.2
Height	4.0

FEATURES

Ground Floor
Air Conditioning

BALMORAL
(Ground Floor)

CAPACITIES

Maximum Capacity	80
Classroom	36
Boardroom	36
U-shape	30
Reception	80
Banquet	80
Dinner Dance	n/a
Theatre	80
Cabaret	35

DIMENSIONS (m)

Room Size	73.81m ²
Length	12.1
Width	6.1
Height	4.0

FEATURES

Ground Floor
Air Conditioning

BALMORAL & BUCKINGHAM
(Ground Floor)

CAPACITIES

Maximum Capacity	200
Classroom	80
Boardroom	50
U-shape	45
Reception	200
Banquet	160
Dinner Dance	100
Theatre	170
Cabaret	80

DIMENSIONS (m)

Room Size	147.62m ²
Length	12.1
Width	12.2
Height	4.0

FEATURES

Ground Floor
Air Conditioning

BALMORAL, BUCKINGHAM & HIGHGROVE
(Ground Floor)

CAPACITIES

Maximum Capacity	320
Classroom	120
Boardroom	70
U-shape	60
Reception	320
Banquet	250
Dinner Dance	180
Theatre	280
Cabaret	126

DIMENSIONS (m)

Room Size	221.43m ²
Length	12.1
Width	18.3
Height	4.0

FEATURES

Ground Floor
Air Conditioning

SANDRINGHAM OR WINDSOR SUITE
(Ground Floor)

CAPACITIES

Maximum Capacity	25
Classroom	12
Boardroom	15
U-shape	12
Reception	20
Banquet	n/a
Dinner Dance	n/a
Theatre	25
Cabaret	n/a

DIMENSIONS (m)

Room Size	37.21m ²
Length	6.1
Width	6.1
Height	4.0

FEATURES

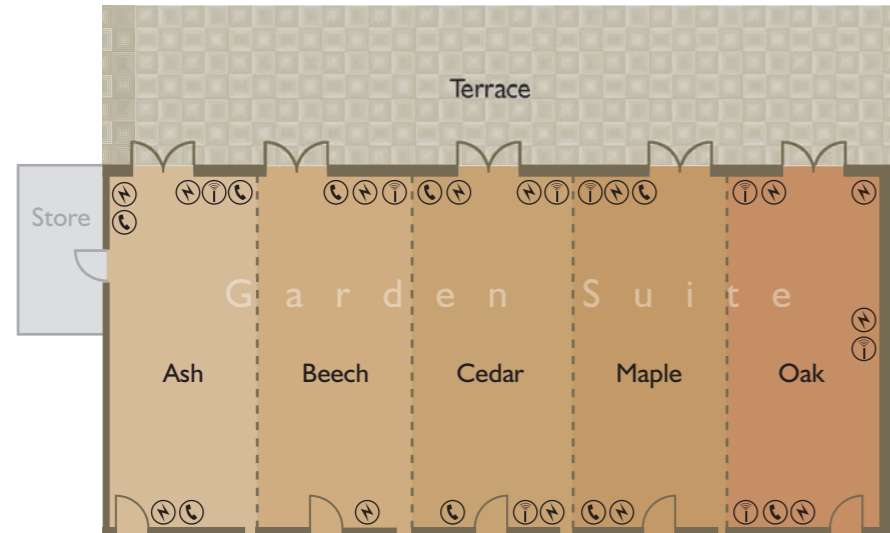
Ground Floor
Air Conditioning

KEY

☎ TELEPHONE POINT
⚡ POWER SUPPLY
📶 AERIAL POINT
🎤 MICROPHONE SOCKET

400
delegates accommodated
in style in one room.



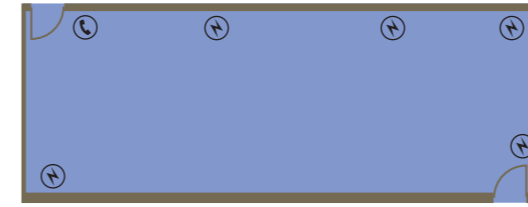


GARDEN SUITE (Lower Ground Floor)

CAPACITIES	
Maximum Capacity	200
Classroom	80
Boardroom	54
U-shape	56
Reception	200
Banquet	160
Dinner Dance	130
Theatre	160
Cabaret	84

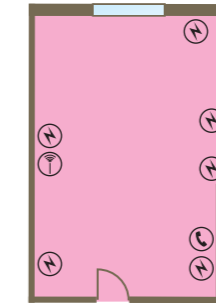
DIMENSIONS (m)	
Room Size	136.8m ²
Length	7.6
Width	18
Height	2.8

FEATURES	
Lower Ground Floor	
Air Conditioning	
Natural Daylight	



WILLOW SUITE (Lower Ground Floor)

CAPACITIES		DIMENSIONS (m)	
Maximum Capacity	50	Room Size	49.45m ²
Classroom	18	Length	11.5
Boardroom	30	Width	4.3
U-shape	20	Height	2.8
Reception	45		
Banquet	40		
Dinner Dance	n/a		
Theatre	50		
Cabaret	24		



TATTON SUITE (First Floor)

CAPACITIES	
Maximum Capacity	18
Classroom	n/a
Boardroom	10
U-shape	n/a
Reception	n/a
Banquet	n/a
Dinner Dance	n/a
Theatre	18
Cabaret	n/a

DIMENSIONS (m)	
Room Size	29.1m ²
Length	6.0
Width	4.85
Height	2.3

FEATURES	
First Floor	
Air Conditioning	
Natural Daylight	

ASH (Lower Ground Floor)

CAPACITIES	
Maximum Capacity	25
Classroom	9
Boardroom	15
U-shape	n/a
Reception	20
Banquet	n/a
Dinner Dance	n/a
Theatre	25
Cabaret	n/a

DIMENSIONS (m)	
Room Size	27.36m ²
Length	7.6
Width	3.6
Height	2.8

FEATURES	
Lower Ground Floor	
Air Conditioning	
Natural Daylight	

ASH & BEECH (Lower Ground Floor)

CAPACITIES	
Maximum Capacity	50
Classroom	24
Boardroom	24
U-shape	18
Reception	50
Banquet	50
Dinner Dance	n/a
Theatre	50
Cabaret	24

DIMENSIONS (m)	
Room Size	54.72m ²
Length	7.6
Width	7.2
Height	2.8

FEATURES	
Lower Ground Floor	
Air Conditioning	
Natural Daylight	

ASH, BEECH & CEDAR (Lower Ground Floor)

CAPACITIES	
Maximum Capacity	85
Classroom	40
Boardroom	33
U-shape	30
Reception	85
Banquet	75
Dinner Dance	50
Theatre	85
Cabaret	40

DIMENSIONS (m)	
Room Size	82.08m ²
Length	7.6
Width	10.8
Height	2.8

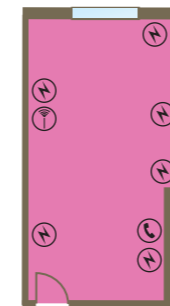
FEATURES	
Lower Ground Floor	
Air Conditioning	
Natural Daylight	

ASH, BEECH, CEDAR & MAPLE (Lower Ground Floor)

CAPACITIES	
Maximum Capacity	125
Classroom	56
Boardroom	44
U-shape	42
Reception	125
Banquet	110
Dinner Dance	85
Theatre	120
Cabaret	70

DIMENSIONS (m)	
Room Size	109.44m ²
Length	7.6
Width	14.4
Height	2.8

FEATURES	
Lower Ground Floor	
Air Conditioning	
Natural Daylight	

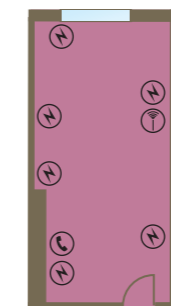


WALTON SUITE (First Floor)

CAPACITIES	
Maximum Capacity	8
Classroom	n/a
Boardroom	8
U-shape	n/a
Reception	n/a
Banquet	n/a
Dinner Dance	n/a
Theatre	n/a
Cabaret	n/a

DIMENSIONS (m)	
Room Size	21.56m ²
Length	6.25
Width	3.45
Height	2.3

FEATURES	
First Floor	
Air Conditioning	
Natural Daylight	

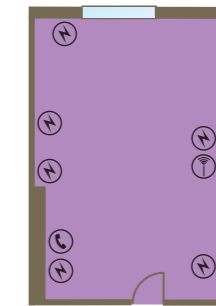


MARBURY SUITE (First Floor)

CAPACITIES	
Maximum Capacity	8
Classroom	n/a
Boardroom	8
U-shape	n/a
Reception	n/a
Banquet	n/a
Dinner Dance	n/a
Theatre	n/a
Cabaret	n/a

DIMENSIONS (m)	
Room Size	21.56m ²
Length	6.25
Width	3.45
Height	2.3

FEATURES	
First Floor	
Air Conditioning	
Natural Daylight	



ARLEY SUITE (First Floor)

CAPACITIES	
Maximum Capacity	10
Classroom	n/a
Boardroom	10
U-shape	n/a
Reception	n/a
Banquet	n/a
Dinner Dance	n/a
Theatre	n/a
Cabaret	n/a

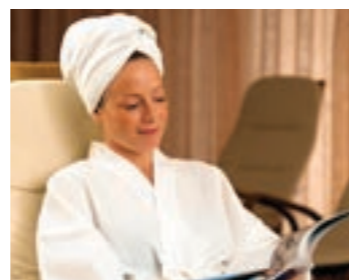
DIMENSIONS (m)	
Room Size	26.88m ²
Length	6.25
Width	4.3
Height	2.3

FEATURES	
First Floor	
Air Conditioning	
Natural Daylight	

80

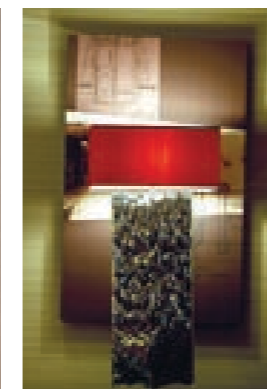
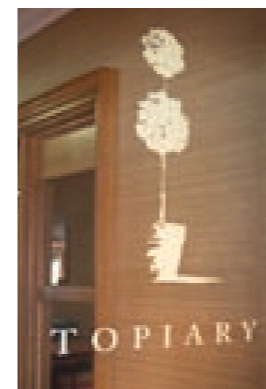
million bubbles to make your skin tingle.

Step into the peaceful, nay serene atmosphere of The Park Royal spa and you will feel the stresses and strains of the day start falling from you – just by being there. Step into our beautifully heated spa bath, and all your cares will be instantly massaged away by endless, billowing eddies of invigoratingly effervescent water. Yet this is just one of a whole profusion of facilities and treatments that will soon have you feeling like a new and altogether more tranquil person. However, should you be one of those people who prefer to wrestle their tension to the ground and pummel it into submission, our superbly equipped gym and excellent swimming pool will help you to do just that. It's tiring just thinking about it – but a massage will soon sort that out!

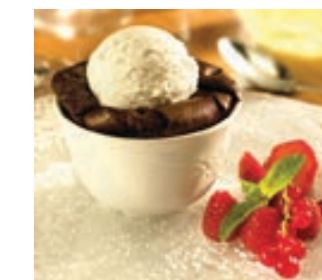


3

courses of mouthwatering perfection.



When you sit down at your table in our outstanding Topiary in the Park restaurant, do so with oodles of anticipation and just the merest soupçon of trepidation. For you are about to be presented with a meal that may well require your tastebuds to operate on an altogether higher plain than they may previously have been called upon to do. You see, our reputation for being one of the finest restaurants in the entire county of Cheshire is thoroughly deserved, and with dishes such as fillet medallions with horseradish rosti, honeyed shallots, green beans and red wine sauce gracing the menu, it's hard to believe that this is about to change any day soon. And once you have come back down to earth from culinary heaven, why not take a little walk around the grounds, stop off at the Topiary Terrace for a drink, or retire to your room with a nightcap in your hand and a very, very satisfied smile on your face.



100

yards to our gates and
the world that lies beyond.



Just a hop, skip and a jump from The Park Royal lies a veritable smorgasbord of post-conference recreational opportunities. In the leafy, peaceful towns of Knutsford and its equally alluring neighbours, for example, you will discover a wealth of genteel dining, cosy pubs and convivial bars. It really is Cheshire-set living at its best. A short jaunt up the M56, however, lies the non-stop, 24-hour-party-people playground that is Manchester, with its up-market shops, first-class theatres, excellent galleries and more nightlife venues than you could shake a jolly large Mojito at. All you need do is decide which kind of night out you want, and we'll be happy to point you in the right direction.



Directions

Leave the **M56 at Junction 10**, take the A49 towards Warrington. 200 yards, turn right at the traffic lights and the hotel is 75 yards on the right.

BY RAIL

Warrington Bank Quay Station – 4 miles.
Warrington Central Station – 4 miles

BY AIR

Manchester – 12 miles.

**For reservations and general enquiries
please call 01925 730 706
Email: parkroyalevents@QHotels.co.uk
or visit www.QHotels.co.uk**



The gorgeousness doesn't end here. There are 20 other QHotels to visit across the country.

The Westerwood
Hotel & Golf Resort
Nr Glasgow

Aldwark Manor
Golf & Spa Hotel
York

The Queens
Leeds

Tankersley Manor
Tankersley, Nr Sheffield

The Midland
Manchester

Crewe Hall
Crewe, Cheshire

Forest Pines
Hotel & Golf Resort
North Lincolnshire

The Nottingham Belfry
Nottingham

Telford Hotel & Golf Resort
Shropshire

Stratford Manor
Stratford-upon-Avon

The Stratford
Stratford-upon-Avon

Chesford Grange
Kenilworth, Warwickshire

Hellidon Lakes
Golf & Spa Hotel
Hellidon, Northamptonshire

The Cambridge Belfry
Cambourne, Cambridge

The Cheltenham Chase Hotel
Gloucestershire

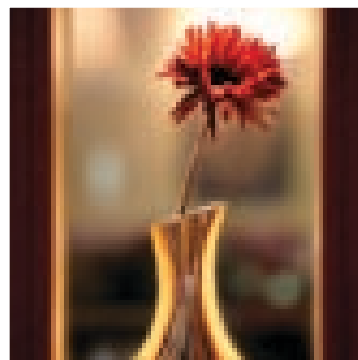
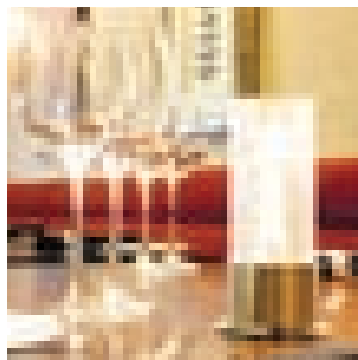
The Oxford Belfry
Thame, Oxford

The Hampshire Court Hotel
Basingstoke, Hampshire

Norton Park
Winchester, Hampshire

Bridgewood Manor
Chatham, Kent

Ashford International Hotel
Ashford, Kent



The Park Royal
Stretton Road
Stretton
Cheshire WA4 4NS

Tel: 01925 730 706
Fax: 01925 730 740

Email: parkroyalevents@QHotels.co.uk
www.QHotels.co.uk

Galileo – QH58197
Sabre – QH14647

Amadeus – QHXWN385
Worldspan – QH83385

QHOTELS

You can take advantage of all we have to offer secure in the knowledge that everything we do at QHotels ensures a positive approach to our staff, our community and the environment.



Hotel Group of the Year
2008 - 2009